



40 Duncroft, Windsor, SL4 4HH
£415,000 Freehold

CHAIN FREE A three bedroomed terrace house in need of updating throughout. The property has a good sized garden and parking space for two cars at the front. It is conveniently located for local shops, schools and easy reach of the town centre

Entrance Porch

Glazed panelled door to

Entrance Hall

Sitting/Dining Room

Fireplace with wooden surround, sliding patio doors to garden

Kitchen

Fitted with units incorporating stainless steel sink, work surfaces with floor and wall cupboards and drawers, space for cooker, tiled splashbacks and surround, Potterton gas fired boiler, understairs storage cupboard

Utility Room

Fitted units, work surface, floor and wall cupboards and drawers, doors to the front and back of the house

First Floor Landing

Access hatch to loft

Shower Room

Good sized, enclosed, glazed shower cubicle, wash hand basin with cupboard under, built in airing cupboard, fully tiled walls

Separate WC

Close coupled WC, part tiled walls

Bedroom 1

Built in wardrobe cupboard

Bedroom 2

Built in wardrobe cupboard

Bedroom 3

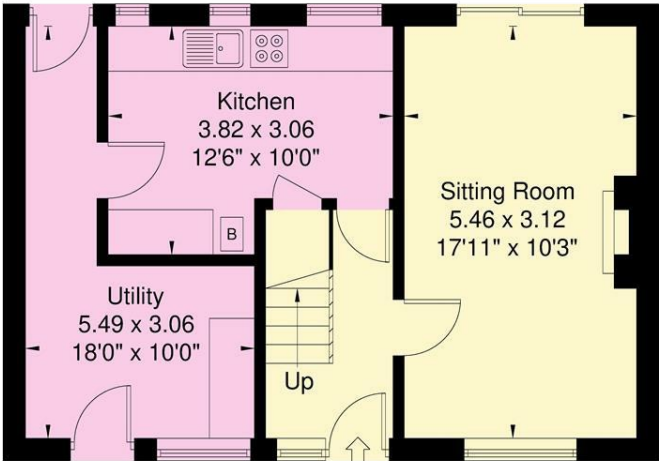
Outside

Rear garden of good size, laid to lawn with central pathway, panelled fencing to the side boundaries. Greenhouse. Two garden sheds. Outside tap. Parking to the front for two cars

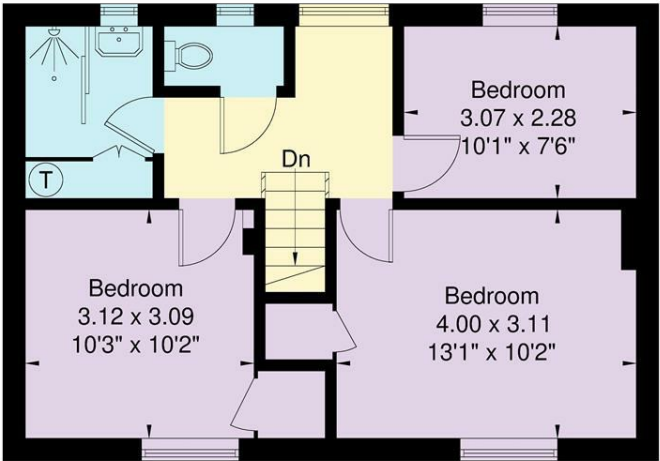
Floor Plan

Approximate Floor Area = 89.64 sq m / 964.87 sq ft

Duncroft



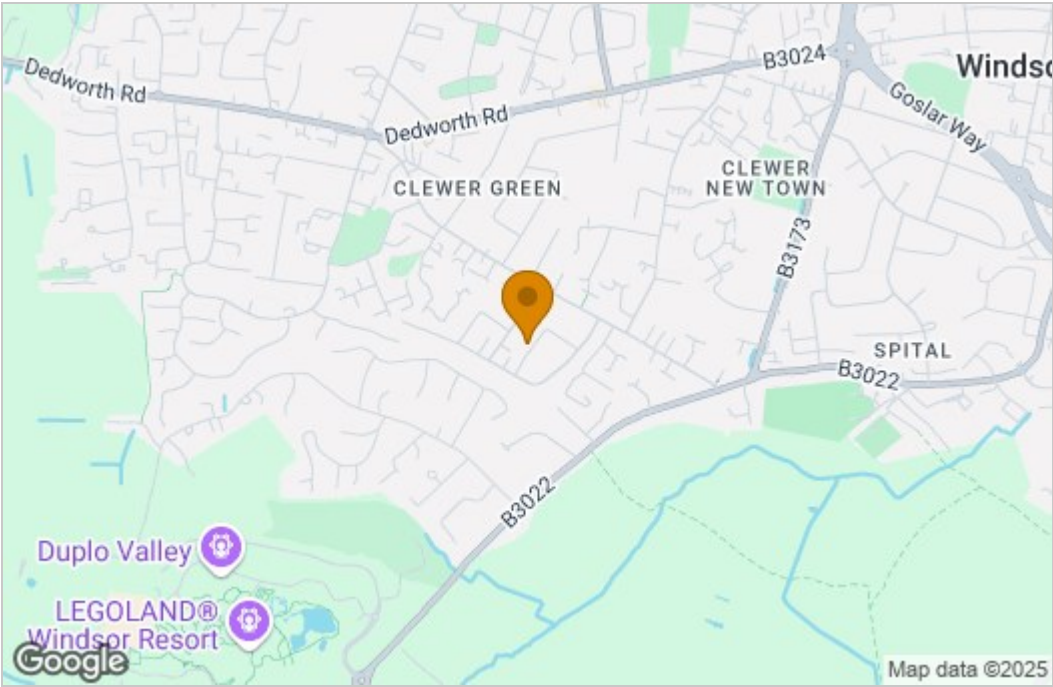
Ground Floor



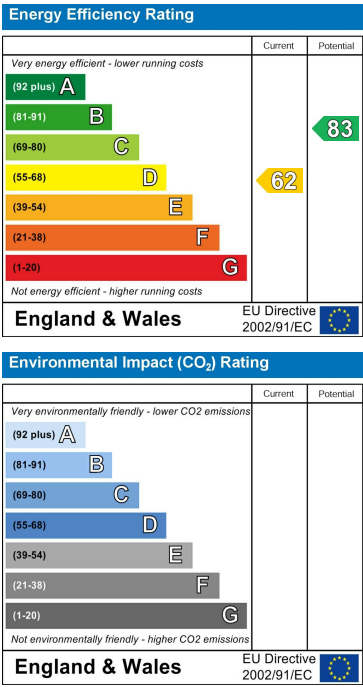
First Floor

Illustration for identification purposes only,
measurements are approximate, not to scale.

Area Map



Energy Efficiency Graph



These particulars, whilst believed to be accurate are set out as a general outline only for guidance and do not constitute any part of an offer or contract. Intending purchasers should not rely on them as statements of representation of fact, but must satisfy themselves by inspection or otherwise as to their accuracy. No person in this firms employment has the authority to make or give any representation or warranty in respect of the property.